

# STATEMENT ON A NONPROPRIETARY NAME ADOPTED BY THE USAN COUNCIL

USAN (hi-141) SERCLUTAMAB TALIRINE

PRONUNCIATION ser kloo' ta mab tal' i reen

THERAPEUTIC CLAIM Treatment of advanced solid tumors

CHEMICAL NAMES

1. Immunoglobulin G1[238-cysteine], anti-(human epidermal growth factor receptor) (human-*Mus musculus* monoclonal ABT-806 AM1 S238C  $\gamma$ 1-chain), disulfide with human-*Mus musculus* monoclonal ABT-806 AM1 S238C  $\kappa$ -chain, dimer
2. immunoglobulin G1-kappa, anti-(*Homo sapiens* Epidermal growth factor receptor (Receptor tyrosine-protein kinase erbB-1, EC=2.7.10.1)); monoclonal antibody;  $\gamma$ 1 heavy chain (1-446) [VH (*Homo sapiens* IGHV4-30-4\*01 (81%) – (IGHD)-IGHJ4\*01 (93%)) [9.7.9] (1-116) -*Homo sapiens* IGHG1\*03 {CH1[R<sup>97</sup>>K(213)], CH2[S<sup>9</sup>>C(238)]} (117-446)], (219-214')-disulfide with  $\kappa$  light chain (1'-214') [V-KAPPA (*Mus musculus* IGKV14-100\*01 (86%) – IGKJ1\*01/*Homo sapiens* IGKV1-12\*01 (75%) –IGKJ4\*01 (91%))][6.3.9] (1'-107') -*Homo sapiens* IGKC\*01 (108'-214')], dimer (225-225":228-228")-bisdisulfide, two talirines are S-linked to cysteins 138 and 138".

## STRUCTURAL FORMULA

### Heavy chain

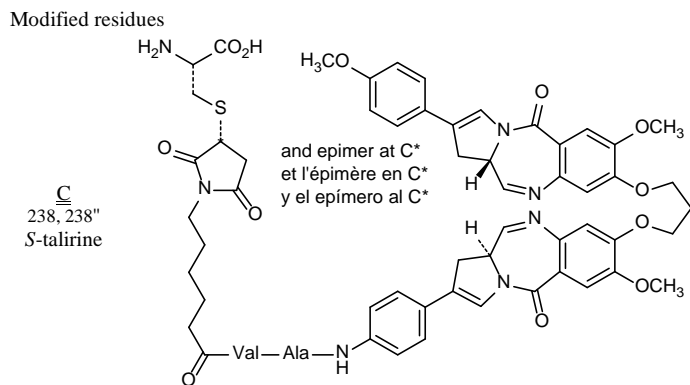
EVQLQESGPG	LVKPSQTLSL	TCTVSGYSIS	RDFAWNWIRQ	PPGKLEWWMG	50
YISYNGNTRY	QPSLKSRITI	SRDTSKNQFF	LKLNSTVAAD	TATYYCVTAS	100
RGFPYWGQGT	LVTVSSASTK	GPSVFPLAPS	SKSTSGGTAA	LGCLVKDYFP	150
EPVTVSWNSG	ALTSGVHTFP	AVLQSSGLYS	LSSVVTVPSS	SLGTQTYICN	200
VNHKPSNTKV	DKKVEPKSCD	KTHTCPPCPA	PELLGGGCVF	LFPPKPKDTL	250
MISRTPEVTC	VVVDVSHEDP	EVKFNWYVDG	VEVHNAKTKP	REEQYNSTYR	300
VVSVLTVLHQ	DWLNQKEYKC	KVSNKALPAP	IEKTISKAKG	QPREPQVYTL	350
PPSREEMTKN	QVSLTCLVKG	FYPSDIAVEW	ESNGQPENNY	KTTPPVLDSD	400
GSFFLYSKLT	VDKSRWQQGN	VFSCSVMHEA	LHNHYTQKSL	SLSPGK	446

### Light chain

DIQMTQSPSS	MSVSVGDRVT	ITCHSSQDIN	SNIGWLQQKP	GKSFKGLIYH	50'
GTNLDGVPSP	RFSGSGSGTD	YTLTISSLQP	EDFATYYCVQ	YAQFPWTFGG	100'
GTKLEIKRTV	AAPSVFIFPP	SDEQLKSGTA	SVVCLLNIFY	PREAKVQWKV	150'
DNALQSGNSQ	ESVTEQDSKD	STYLSSTLT	LSKADYEKHK	VYACEVTHQG	200'
LSSPVTKSFN	RGEC				214'

### Disulfide bridges location

22-96	22"-96"	23'-88'	23"-88"	134'-194'	134"-194"	143-199	143"-199"
214'-219	214"-219"	225-225"	228-228"	260-320	260"-320"	366-424	366"-424"



Glycosylation sites (N)  
Asn-296 Asn-296''

MOLECULAR FORMULA	C <sub>6558</sub> H <sub>10066</sub> N <sub>1726</sub> O <sub>2032</sub> S <sub>46</sub> . (non-glycosylated)
MOLECULAR WEIGHT	147.07 kDa (non-glycosylated)
TRADEMARK	None as yet
SPONSOR	AbbVie
CODE DESIGNATIONS	ABBV-321
<u>CAS</u> REGISTRY NUMBER	2140174-56-5
UNII	7W0O278T12
WHO NUMBER	10959

gbk