

STATEMENT ON A NONPROPRIETARY NAME ADOPTED BY THE USAN COUNCIL

USAN (JK-243)

PEGLOPRASTIDE

PRONUNCIATION

peg" loe pras' tide

THERAPEUTIC CLAIM

Cancer imaging synthetic protease-activated fluorescent peptide

CHEMICAL NAMES

1. Poly(oxy-1,2-ethanediyl),  $\alpha$ -methyl- $\omega$ -hydroxy-, 6-ester with *N*-[6-[2-[7-(1-ethyl-1,3-dihydro-3,3-dimethyl-5-sulfo-2*H*-indol-2-ylidene)-1,3,5-heptatrien-1-yl]-3,3-dimethyl-5-sulfoindolio]-1-oxohexyl]-D- $\alpha$ -glutamyl-D- $\alpha$ -glutamyl-D- $\alpha$ -glutamyl-D- $\alpha$ -glutamyl-D- $\alpha$ -glutamyl-4-[1-[[2-(carboxyamino)ethoxy]imino]ethyl]-L-phenylalanyl-2-(2-aminoethoxy)acetyl-L-prolyl-L-leucylglycyl-S-methyl-L-cysteinyl-L-alanyl-glycyl-D-arginyl-D-arginyl-D-arginyl-D-arginyl-D-arginyl-D-arginyl-D-arginyl-D-arginyl-S-[1-[2-[[6-[2-[5-(1-ethyl-1,3-dihydro-3,3-dimethyl-5-sulfo-2*H*-indol-2-ylidene)-1,3-pentadien-1-yl]-3,3-dimethyl-5-sulfoindolio]-1-oxohexyl]amino]ethyl]-2,5-dioxo-3-pyrrolidinyl]-D-cysteinamide (Source: CAS)
2. *N*<sup>2</sup>-1-(6-{2-[7-(1-ethyl-3,3-dimethyl-5-sulfo-1,3-dihydro-2*H*-indol-2-ylidene)hepta-1,3,5-trien-1-yl]-3,3-dimethyl-5-sulfonato-3*H*-indol-1-ium-1-yl}hexanoyl)penta-D- $\alpha$ glutamyl-4-[*N*-(2-[[ $\omega$ -methoxypoly(oxyethylene)- $\alpha$ carbonyl]amino]ethoxy)ethanimidoyl]-L-phenylalanyl-2-(2-aminoethoxy)acetyl-L-prolyl-L-leucylglycyl-S-methyl-L-cysteinyl-L-alanyl-glycyl-octa-D-arginyl-S-[(3 $\Xi$ )-1-[2-(6-{2-[5-(1-ethyl-3,3-dimethyl-5-sulfo-1,3-dihydro-2*H*-indol-2-ylidene)penta-1,3-dien-1-yl]-3,3-dimethyl-5-sulfonato-3*H*-indol-1-ium-1-yl}hexanamido)ethyl]-2,5-dioxopyrrolidin-3-yl]-D-cysteinamide (Source : WHO pINN list 120)

STRUCTURAL FORMULA

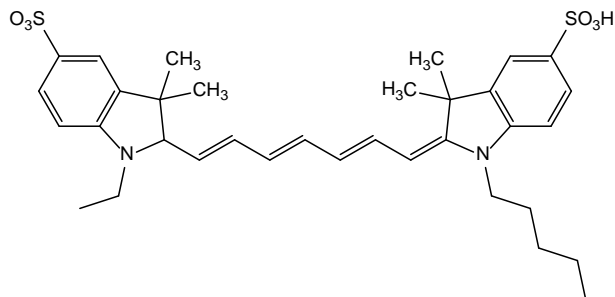
Sequence

EEEEFXPLG CAGRRRRRRR RC

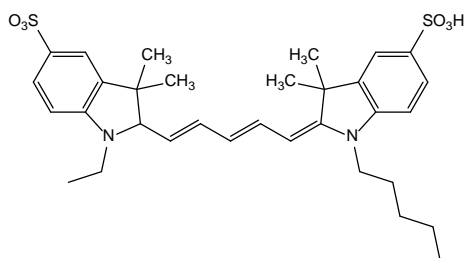
22

Modifications

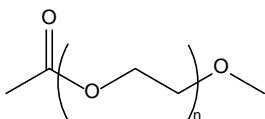
E1 : fluorescent dye conjugation



D22 : fluorescent dye conjugation



F6 : pegylation



MOLECULAR FORMULA	$(C_2H_4O)_n C_{191} H_{287} N_{55} O_{52} S_6$
MOLECULAR WEIGHT	6500
TRADEMARKS	None yet
SPONSOR	Avelas Biosciences
CODE DESIGNATION	AVB-620
<u>CAS</u> REGISTRY NUMBER	2138471-65-3
UNII	U6M486P0QJ
WHO NUMBER	10946
SCS	