

STATEMENT ON A NONPROPRIETARY NAME ADOPTED BY THE USAN COUNCIL

USAN (KL-231) PATRITUMAB DERUXTECAN

PRONUNCIATION pat rit' ue mab der" ux tee' kan

THERAPEUTIC CLAIM Antineoplastic

CHEMICAL NAMES

Immunoglobulin G1, anti-(human epidermal growth factor receptor HER3) (human monoclonal U3-1287 γ 1-chain), complex with human monoclonal U3-1287 κ -chain, dimer, octakis(thioether) with *N*-[6-(3-mercapto-2,5-dioxo-1-pyrrolidinyl)-1-oxohexyl]glycylglycyl-L-phenylalanyl-*N*-[[2-[[[(1*S*,9*S*)-9-ethyl-5-fluoro-2,3,9,10,13,15-hexahydro-9-hydroxy-4-methyl-10,13-dioxo-1*H*,12*H*-benzo[*de*]pyrano[3',4':6,7]indolizino[1,2-*b*]quinolin-1-yl]amino]-2-oxoethoxy]methyl]glycinamide

Immunoglobulin G1-kappa, anti-[*Homo sapiens* ERBB3 (receptor tyrosine-protein kinase erbB-3, HER3)], *Homo sapiens* monoclonal antibody, conjugated to deruxtecan, comprising a linker and a camptothecin derivative; gamma1 heavy chain *Homo sapiens* (1-447) [VH (*Homo sapiens* IGHV4-34*01 (99.0%) -(IGHD) - IGHJ2*01 (100%)) [8.7.11] (1-117) - *Homo sapiens* IGHG1*03 (100%) G1m3, nG1m1 (CH1 R120 (214) (118-215), hinge 1-15 (216-230), CH2 (231-340), CH3 E12 (356), M14 (358) (341-445), CHS (446-447)) (123-452)], (220-220')-disulfide with kappa light chain *Homo sapiens* (1'-220') [V-KAPPA (*Homo sapiens* IGKV4-1*01 (95.0%) -IGKJ1*01 (100%)) [12.3.9] (1'-113') - *Homo sapiens* IGKC*01 (100%) Km3 A45.1 (159), V101 (197) (114'-220')]; dimer (226-226":229-229")-bisdisulfide, produced in Chinese Hamster Ovary (CHO) cell line, glycoform alfa; conjugated, on an average of 8 cysteinyl, to deruxtecan, comprising a linker and a camptothecin derivative . (Source : INN)

STRUCTURAL FORMULA

Heavy chain X, X''

QVQLQQWGAG	LLKPSETLSL	TCAVYGGGFS	GYWWSWIRQP	PGKGLEWIGE	50
INHSGSTNYN	PSLKSRTVIS	VETSKNQFSL	KLSSVTAADT	AVYYCARDKW	100
TWYFDLWGRG	TLVTVSSAST	KGPSVFPLAP	SSKSTSGGTA	ALGCLVKDYF	150
PEPVTVSWNS	GALTSGVHTF	PAVLQSSGLY	SLSSVVTVPS	SSLGTQTYIC	200
NVNHKPSNTK	VDKRVEPKSC	DKTHTCPPCP	APELLGGPSV	FLFPPKPKDT	250
LMISRTPEVT	CVVVDVSHED	PEVKFNWYVD	GVEVHNAKTK	PREEQYNSTY	300
RVVSVLTVLH	QDWLNGKEYK	CKVSNKALPA	PIEKTISKAK	GQPREPQVYT	350
LPPSREEMTK	NQVSLTCLVK	GFYPSDIAVE	WESNGQPENN	YKTPPVVLDL	400
DGSFFLYSKL	TVDKSRWQQG	NVFSCSVMHE	ALHNNHTQKS	LSLSPGK	450

Light chain X', X'''

DIEMTQSPDS	LAVSLGERAT	INCRSSQSVL	YSSSNRNYLA	WYQQNPGQPP	50
KLLIYWASTR	ESGVPDRFSG	SGSGTDFTLT	ISSLQAEDVA	VYYCQQYYST	100
PRTFGQGTKV	EIKRTVAAPS	VFIFPPSDEQ	LKSGTASVVC	LLNNFYPREA	150
KVQWKVDNAL	QSGNSQESVT	EQDSKDTYS	LSSTLTLSKA	DYEKHKVYAC	200
EVTHQGLSSP	VTKSFNRGEC				250

Disulfide bridges location

Intra-H 22-95 144-200 261-321 367-425

22"-95" 144"-200" 261"-321" 367"-425"

Intra-L 23'-94' 140'-200'

23'''-94''' 140'''-200'''

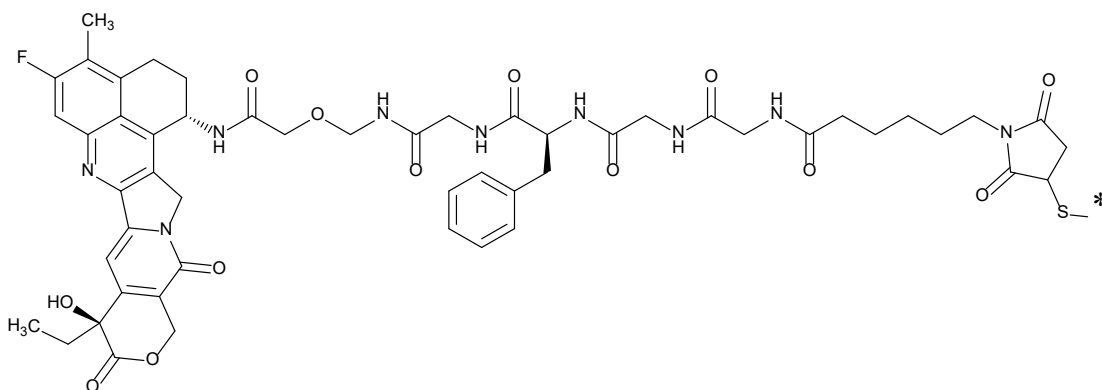
Inter-H-L 220-220' 220"-220'''

Inter-H-H 226-226" 229-229"

N-glycosylation sites

297, 297"

Deruxtecan Conjugation to cysteines: [1_220], [1_226], [1_229], [2_220], [2_226], [2_229], [3_220], [4_220].



MOLECULAR FORMULA	C ₆₉₅₈ H ₁₀₅₂₈ F ₈ N ₁₈₁₂ O ₂₁₄₂ S ₄₀
MOLECULAR WEIGHT	155.5 kDa
TRADEMARK	None as yet
SPONSOR	Daiichi Sankyo, Inc
CODE DESIGNATIONS	U3-1402
<u>CAS</u> REGISTRY NUMBER	2227102-46-5
UNII	3XPI7EG4W8
WHO NUMBER	11093

gbk