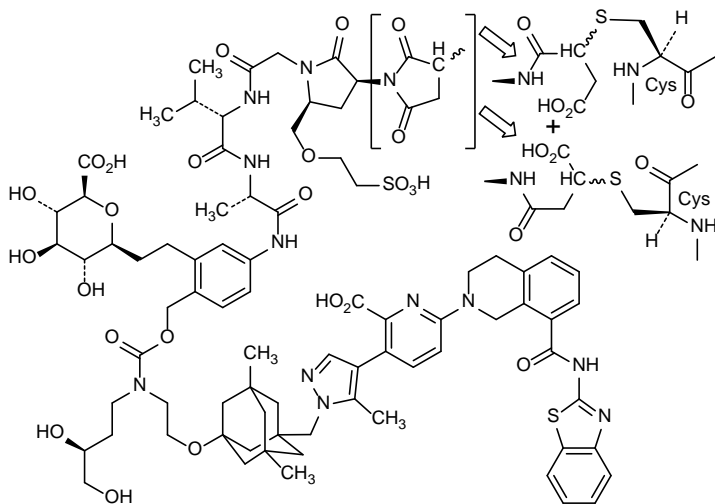




Disulfide bridges location (inter-chain)

22-96    22"-96"  
 214'-219    214"-219"  
 23'-88'    225-225"  
 23"-88"  
 228-228"  
 134'-194'    260-320  
 134"-194"  
 260"-320"  
 143-199    366-424  
 143"-199"  
 366"-424"

Modified residues (C average of 2 linked to clezutoclax)



Glycosylation sites (N)

Asn-296    Asn-296"

MOLECULAR FORMULA

$C_{6454}H_{9874}N_{1694}O_{2020}S_{42} (C_{83}H_{105}N_{12}O_{25}S_2)_2$

MOLECULAR WEIGHT

148.3 kDa

TRADEMARK

None as yet

SPONSOR

AbbVie

CODE DESIGNATIONS

ABBV-155

CAS REGISTRY NUMBER

2229859-12-3

UNII

TY49T0B03B

WHO NUMBER

11147

gbk